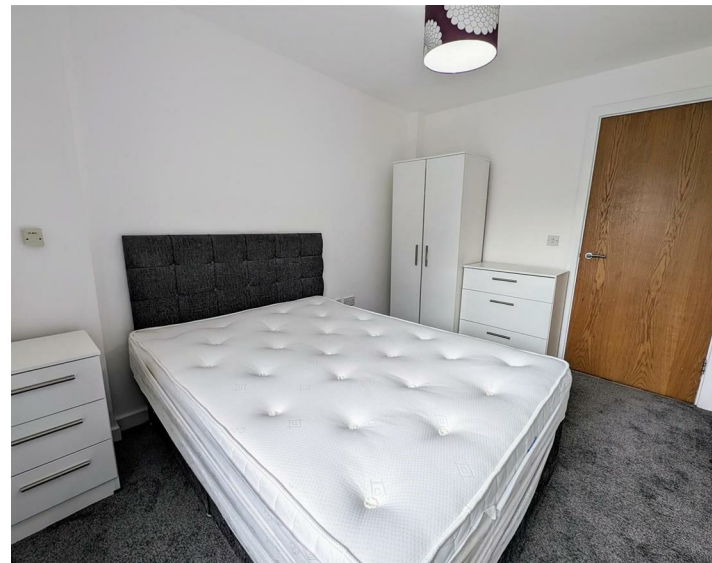




Apt 267 The Reach, Liverpool, L3 2DE
£975 PCM

www.cityresidential.co.uk



About the Property

Available Now!

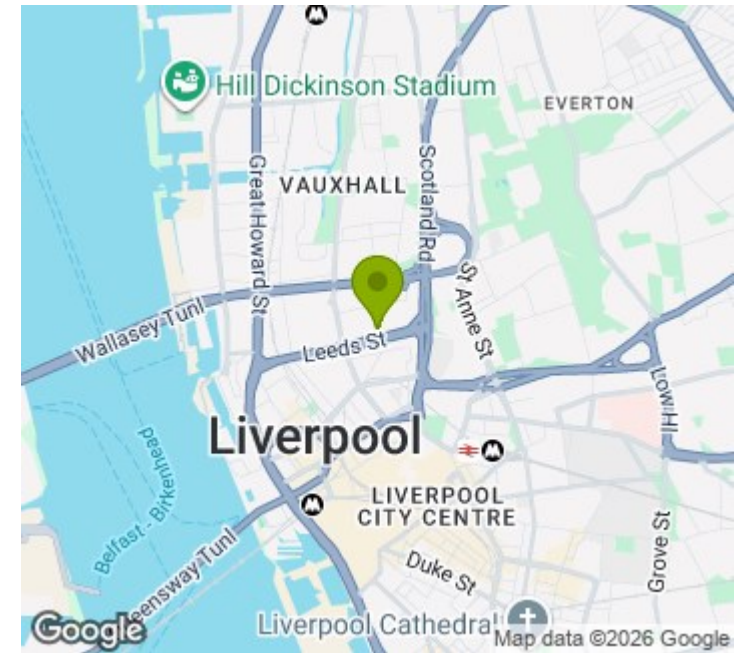
This ground-floor, two-bedroom apartment is situated in a sought-after development on Leeds Street, right on the fringe of the city centre. It's conveniently located within a short walk to both the city centre and the docklands, and close to various transport links.

The apartment features two spacious double bedrooms, a fully-equipped kitchen, a sizable living area, and a well appointed bathroom.

No parking is available with this property.

Contact us today to schedule a viewing.

- Fully Furnished
- Council Tax Band - C
- Deposit - £1125
- EPC Rating - D
- No Pets - Head Lease Restriction



Energy Efficiency Rating

	Current	Potential
Very energy efficient - lower running costs		
(92 plus) A		
(81-91) B		
(69-80) C		79
(55-68) D	64	
(39-54) E		
(21-38) F		
(1-20) G		
Not energy efficient - higher running costs		
England & Wales	EU Directive 2002/91/EC	



City Residential

81/87 Victoria Street, The Old Haymarket, Liverpool L1 6DG

T: 0151 231 6100 F: 0151 231 6105

E: sales@cityresidential.co.uk



WWW.
cityresidential
.co.uk